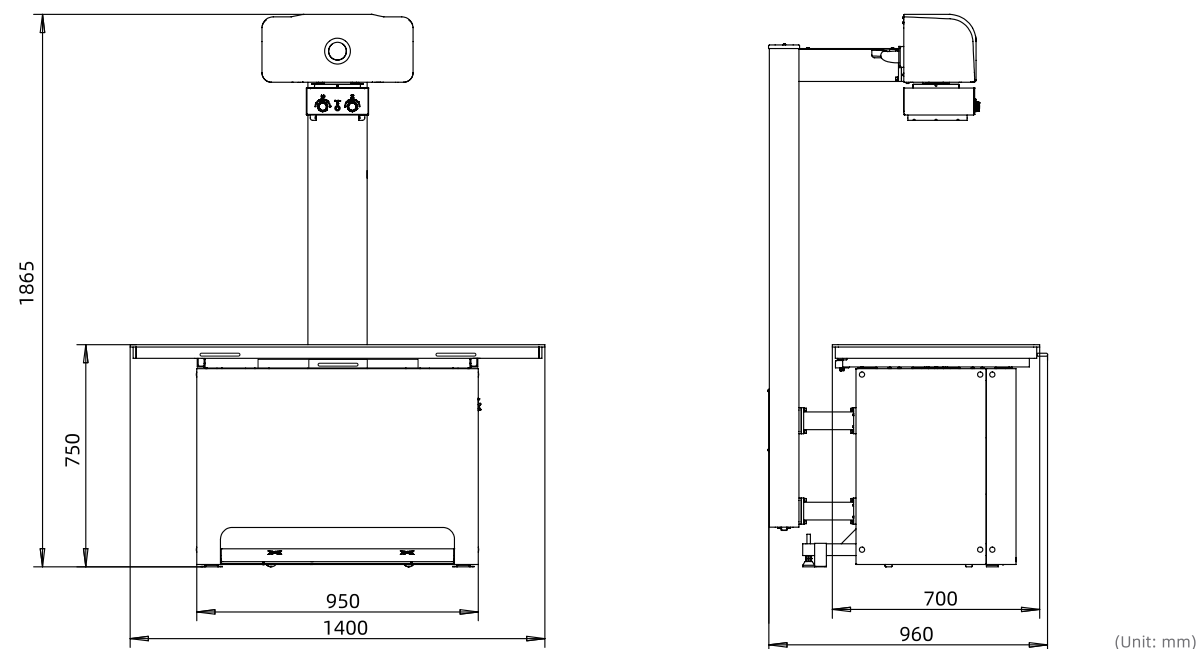


## Product specification



**WDM**

Beijing Wandong Medical Technology Co., Ltd.

Address: Building 3 No.9 Jiuxianqiaodong Road, Chaoyang

District, 100015, Beijing, P.R.China

Tel: +86-10-84575792/3/5/6

Fax: +86-10-84575794

Web: [www.wandong.com.cn](http://www.wandong.com.cn)

E-mail: [International@wandong.com.cn](mailto:International@wandong.com.cn)

## New Oriental **1000N6 Plus-VET**

Veterinary Digital Radiography System



Veterinary Dynamic DR

Used in pet hospitals

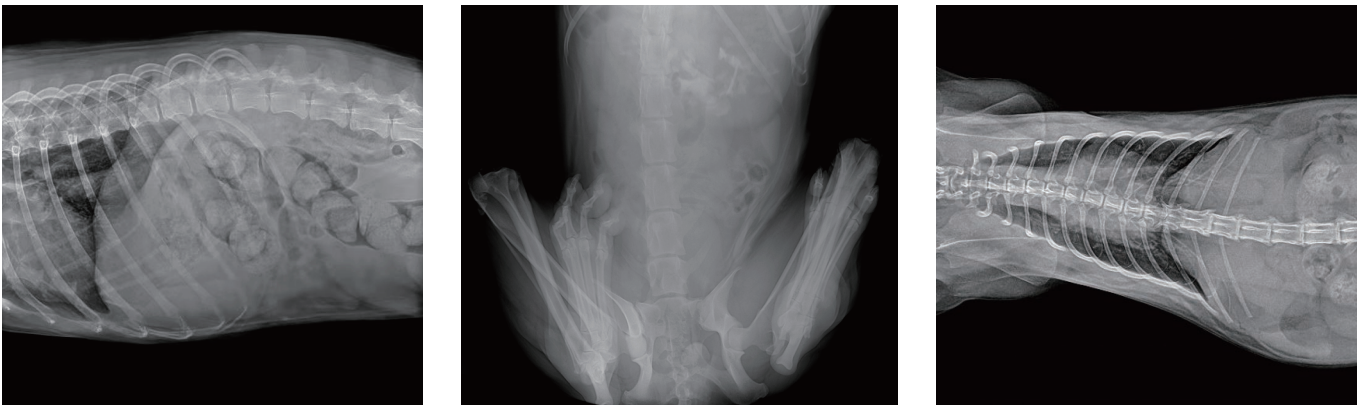
Product introduction

Vet Dynamic DR

New Oriental 1000N6 Plus-VET is a compact and multi-functional digital fluoroscopic and radio-graphic system with an examination table that can perform surgery as well as X-ray radiography and fluoroscopy. The examination table can be flexibly floated from left-to-right and front-to-back, and it is easy to install, saves more space, and better improves work efficiency.



Clinical Pictures



Product feature

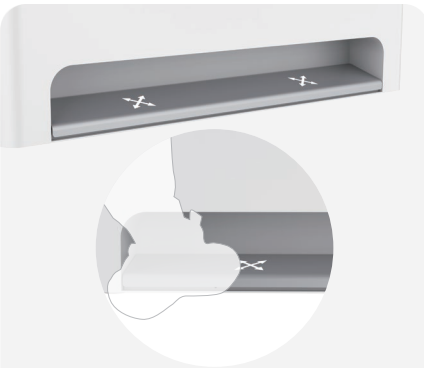
Surgical beds with radiography and fluoroscopy 3 in 1

High Definition radiography and fluoroscopy

Large Dynamic Flat Panel Detector

Surgical bed can float from side to side and front to back

Compact and small footprint



Foot unlock for easy table adjustment  
Bed floats when unlocked by foot pedal



The table floats left to right  
Adapt to different surgical needs



The table floats back and forth  
The bed can be floated on a foot pedal to facilitate surgical needs



Portable Double Handle



Table surface is easy to clean



Pull-out flat panel detector

Technical Parameters

model number		New Oriental 1000N6 Plus-VET	
Power conditions		Tube	
Power supply (V)	AC220	Focus (mm)	1.0/2.0
Power (kW)	32	Target Angle (°)	16
Flat Panel Detector		Anode heat capacity (kHu)	140
Type	Amorphous Silicon	Column	
Spatial Resolution (lp/mm)	3.4	Overall dimensions (mm)	1400 x 960 x 1865
Pixel Matrix	3072 × 3072	Height of bed from floor (mm)	750
Pixel size (μm)	139	SID (mm)	1000
AD conversion bits (bit)	16	Front-to-back floating range of the bed (mm)	±80
Effective imaging area (mm²)	427 × 427	Bed left/right floating range (mm)	±200
Data Interface	Ethernet	Weight (kg)	300
High Pressure Generator			
Kilovolt Range (kVp)	40 - 150		
Milliamp Range (mA)	10 - 400		
Millisecond range (ms)	1 - 20000		
Current and current time product range (mAs)	0.1- 320		
Continuous Fluoroscopic Milliamp Range (mA)	0.5- 10		
Pulse Transmittance Milliamp Range (mA)	10-40		