

dCT-VET600

 Veterinary CBCT 



WDM

Beijing Wandong Medical Technology Co., Ltd.

Address: Building 3 No.9 Jiuxianqiaodong Road, Chaoyang

District, 100015, Beijing, P.R.China

Tel: +86-10-84575792/3/5/6

Fax: +86-10-84575794

Web: www.wandong.com.cn

E-mail: International@wandong.com.cn



Low investment / Easy interpretation / Quick recovery

dCT-VET600
Veterinary CBCT



Multiple functions

Three imaging modes:
CT / Dynamic DR / Static DR
Designed to meet the needs of
X-ray diagnosis in pet hospitals

Excellent performance

0.139mm ultra-thin slice thickness
4.5s scanning speed
Equipped with one click table removal function
600 slices of images per rotation
512mm*512mm/768mm*768mm reconstruction matrix

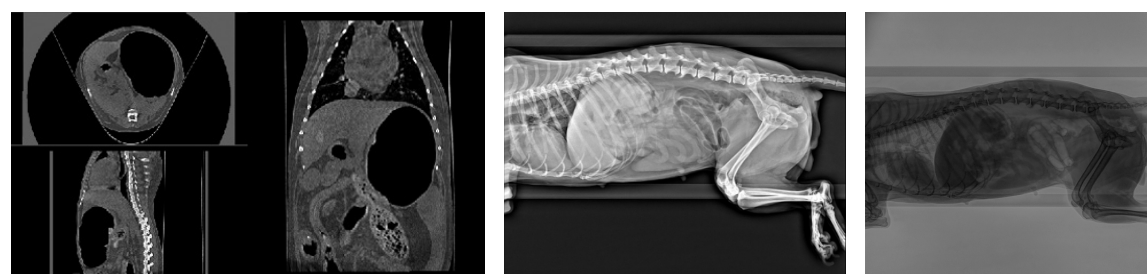
Quick installation

Compact and movable design
Fast installation and debugging

Parameters

Detector Pixel Size	3072*3072
Thinnest Slice Thickness	0.139mm
Tube Voltage	125kV
Tube Current	100mA
Aperture Diameter	560mm
Fastest Scanning Speed	4.5s
Number of Image Layers	600 slices

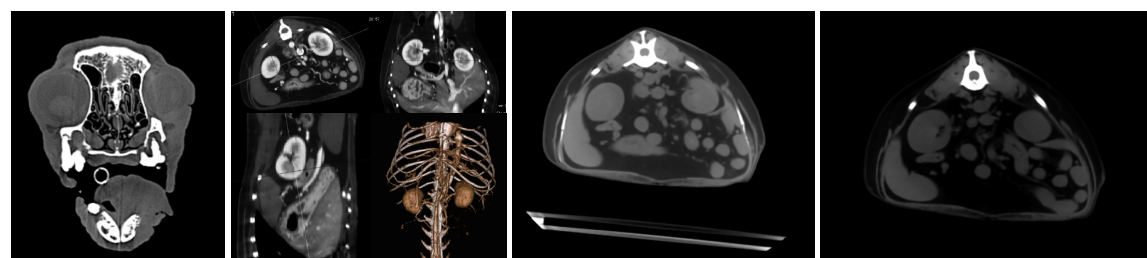
Default Reconstruction Pixels	0.299mm
Radiation Dose	1% VS Spiral CT
Power Supply Type	220V
Overall Dimensions	1.6m*1.39m*1.53m
Total Weight	585kg
Appearance Design	Integrated
Mobility	Yes



CT

DR

Dynamic DR



Nasal cavity

Contrast
enhancement scan of dog

Before table removal

After table removal

Specifications

